

TO LET / FOR SALE

Building 2 - Photon Park. Manufacturing/Distribution Unit of 53,657 sq ft (4,985 sq m) with potential expansion up to 44,000 sq ft (4,088 sq m)



PHOTON P A R K



HARVARD WAY, NORMANTON, WF6 1GX • J31 M62

Description

Building 2 is a two bay, steel portal frame, manufacturing/distribution unit constructed in 2015. The elevations and roof are profile metal clad, with the latter benefiting from excellent natural light provision. The Facility has the following basic specification:-

- Two storey, heated and lit office and amenity block
- Manufacturing/Distribution area with heating
- Eaves height of 8.9m
- Ground and dock level loading*
- Potential to expand on adjacent 2.9 acres of land
- Excellent parking and loading areas
- Roof mounted Solar Panels (60kva capacity)

* Potential to add further ground level loading doors, as shown on the illustrative plan below - subject to planning consent.

Accommodation

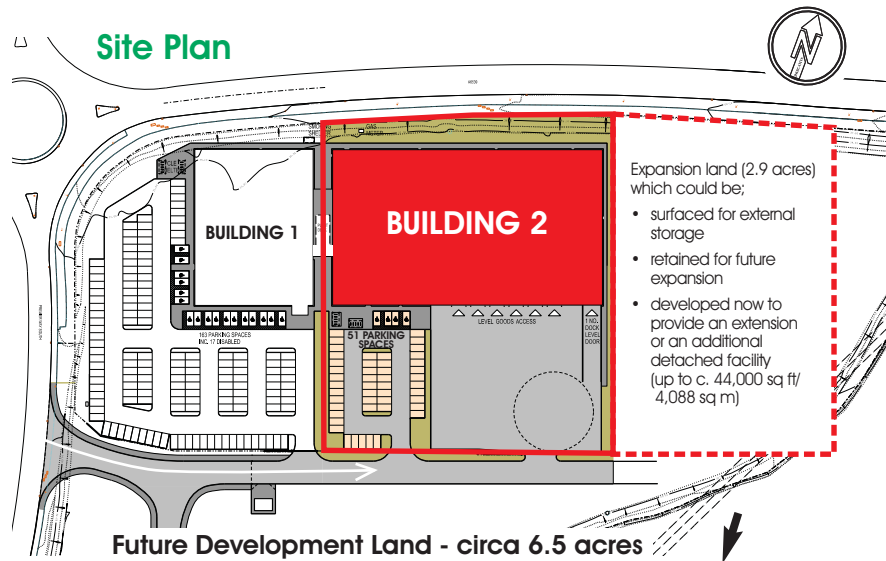
The unit has been measured in line with the RICS Code of Measuring Practice to have the following approximate gross internal areas.

Description	Sq M	Sq Ft
Manufacturing/Distribution	3,731	40,160
GF Offices / Canteen	626.7	6,746
GF Sub total	4,357.7	46,906
FF Offices	476	5,124
FF Mezzanine	151.2	1,627
Total	4,984.9	53,657

PHOTON PARK, HARVARD WAY, NORMANTON, WF6 1GX • J31 M62



Site Plan



Planning

There is detailed planning consent for B1c (Light Industrial), B2 (General Industrial) and B8 (Storage and Distribution) uses.

Services

The property benefits from all mains services.

EPC

The building has an EPC rating of A and score of 23. Full EPC documentation is available upon request.

Terms

The unit is available by way of a new lease, or freehold purchase. The adjoining land can be acquired freehold with Building 2, or alternatively an extension or additional detached unit can be built on this land and either leased or sold.

Carter Jonas

0113 242 5155

carterjonas.co.uk/commercial

Chris Hartnell

chris.hartnell@carterjonas.co.uk

GVA

0113 292 5500

gva.co.uk

Rob Oliver

rob.oliver@gva.co.uk

AWS

0113 235 1362

www.awsltd.co.uk

Nick Arundel

nick@awsltd.co.uk

Important Notice. These particulars are issued by GVA Grimley, Carter Jonas and AWS and for the vendors or lessors of this property whose agents they are, give notice that: (i) the particulars are set out as a general outline only for the guidance of intending purchasers or lessors and do not constitute, nor constitute part of, an offer or contract. (ii) all descriptions, dimensions, references to condition and necessary permission for use and occupation, and other details, are given in good faith and are believed to be correct but any intending purchasers or tenants should not rely on them as statements or representations of fact but satisfy themselves by inspection or otherwise as to the correctness of each of them. (iii) no person in the employment of GVA Grimley, Carter Jonas and AWS has any authority to make or give any representation or warranty whatever in relation to this property. (iv) all rentals and prices are quoted exclusive of VAT. For identification purposes only. Designed and Produced by www.thedesignexchange.co.uk. July 2017.

A Development by
Illuminating INVESTMENTS