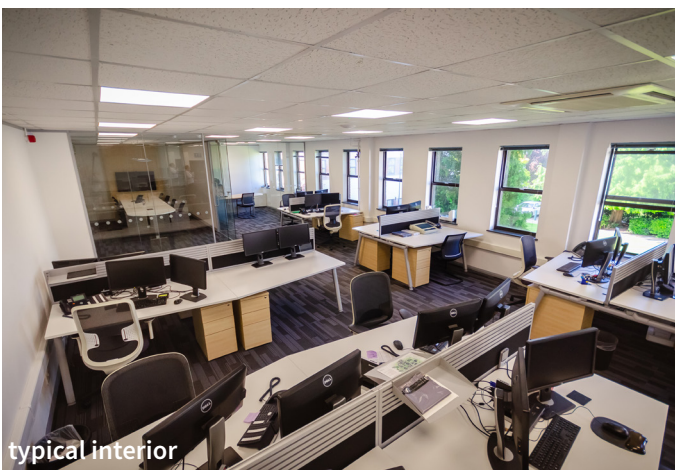


BUILDING 190

A flexible two storey building with a range of offices
Options from 3,073 up to 7,911 sq ft

AVAILABILITY: OCTOBER 2018



KENT SCIENCE PARK

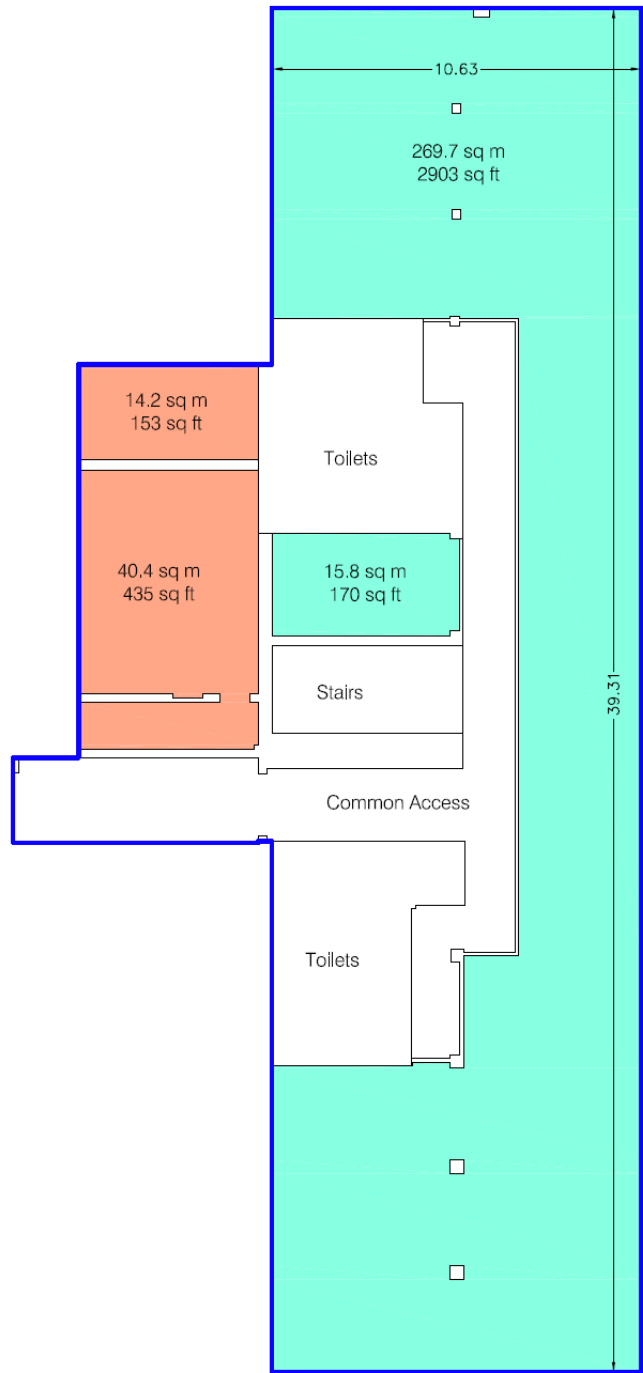
Sittingbourne

Kent

ME9 8PS

www.kentsciencepark.com

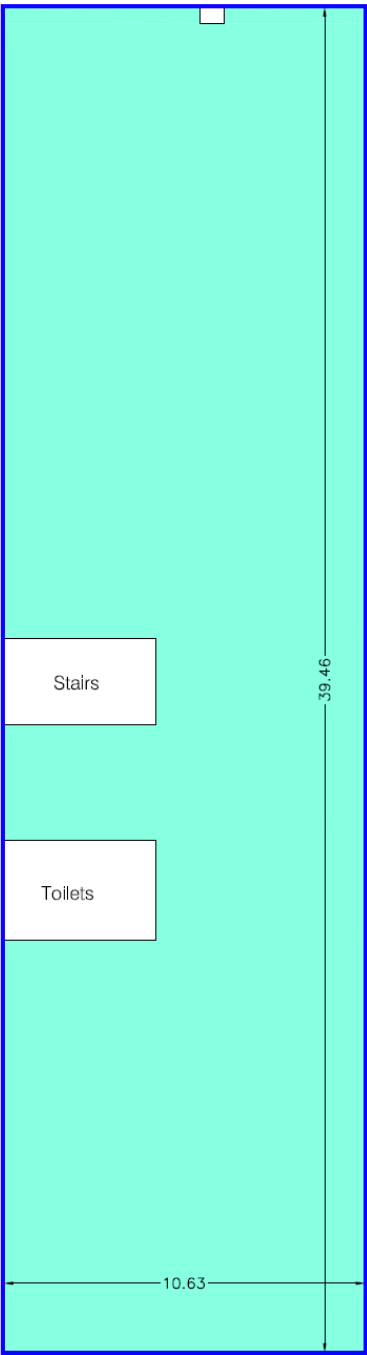
GROUND FLOOR



Floor area (gross internal approx)

	sq ft	sq m	Condition
<div></div>	3,073	285.5	CAT B
<div></div>	588	54.6	storage
Total GF	3,661	340.1	

FIRST FLOOR



Floor area (gross internal approx)

	sq ft	sq m	Condition
<div></div>	4,250	394.8	CAT B
GF & F1	7,911	707.9	

* Total GIA is 9,886 sqft (918.4 sqm)

LANDLORD SPECIFICATIONS

DESCRIPTION

The building provides flexible, low maintenance and cost effective accommodation for a variety of functions. The space can be configured as office or laboratory space.

A CAT B fit out is already in place with a range of meeting rooms, various breakout areas and kitchen installed.

The building is a two minute walk from the central garden and F&B facilities. Parking is available nearby. Gym, sauna and tennis facilities are a stone's throw away.

BUILDING DETAILS

- > Medium temperature heated from the site's district heating system
- > Air Conditioning
- > Steel frame construction with brick infill cladding
- > Suspended floors in server room with anti static flooring
- > Parking: 1 space per 300 sq ft
- > Trunk cabling in place
- > Kitchen and WC facilities
- > 3-phase electricity supply
- > Flexible fit out to suit a range of requirements
- > EPC C rating

TERMS

On application

CONTACT

- > stephen.richmond@altusgroup.com
- > tom.booker@altusgroup.com

